



Systems Guide

2K Grind & Seal

Elite Coatings for the Best Concrete Floors



**Enhance the appearance.
Improve the performance.
Protect the surface.**

The ONYX 2K Grind & Seal System

What is the 2K Grind & Seal

The ONYX 2K GS (grind & seal) is a superior concrete coating system incorporating our 2K CRU WB: a two-component, chemically resistant, waterbased polyurethane that surpasses traditional single-component sealers. This unique chemistry brings a new standard for durability and premium aesthetics in concrete finishes.

Who the 2KGS is for:

The system is used in a wide range of facilities: entertainment venues, food courts, warehouses, manufacturing, animal acre, hospitals, schools, retail, offices, garages and countless others.



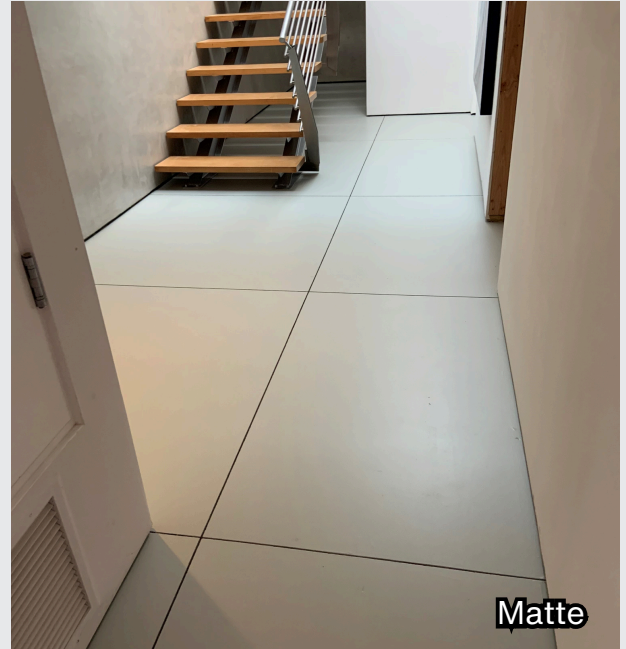
Why the 2KGS

- Nonporous, monolithic, seamless surface resists chemical and fluid penetration
- Easy-to-clean surface requires minimal maintenance
- Stunning appearance which comes in both gloss and matte finishes
- Slip-resistant when adding appropriate aggregate
- Breathable sealer helps tolerate moisture and vapor problems
- Non-yellowing due to polyurethane chemistry
- VOC compliant
- Manufactured in SCAQMD (South Coast Air Quality Management District)
- Easy application process reduces the possibility of error

The ONYX 2K Grind & Seal System

Gloss & Matte Options

The 2K GS has the versatility to come in either a gloss or matte finish. The gloss attracts those desiring a shiny, showroom-like surface. The matte exhibits a subtle appearance breathing life into the concrete.



Shade of Concrete

Lighten the gloss finish by substituting the first coat with ONYX Epoxy Waterbased Fast Primer.

Fast Cure Primer

ONYX Epoxy Waterbased Fast has a 2 hour cure time and will speed up the application process by allowing both coats to be installed on the same day.



The ONYX 2K Grind & Seal System

Increase Safety

To achieve a slip-resistant finish, lightly broadcast aluminum oxide (80-120 grit) into the system and then backroll. It is always best to provide a mockup sample to determine the needs of the coefficient of friction as outlined by ANSI A137.1. Provide a mockup to ensure the size of aggregate and amount used does not make the floor too difficult to clean and maintain.

A primary feature of the 2K GS is how easily it is to clean and maintain the floors from basic usage. The nonporous surface offers pristine resistance to stains caused by numerous liquids and chemicals.

Resist Stains & Improve Cleanup



The ONYX 2K Grind & Seal System

Mixing

The mix ratio of the 2K CRU WB is 3 to 1 by volume. That is, 3 parts of A (resin), to 1 Part B (isocyanate). Mix Part A and Part B together at medium speed for 2 minutes under mechanical agitation with a jiffy pint mixer.

Pour the Part A into a mixing bucket. Add the Part B (in the correct 3:1), and mix 2 minutes until uniform, scraping the sides to insure a uniform mix. Always use clean mixing buckets to prevent contamination of the product.

As is the case with all water-based polymers, any mixed resin left in the bucket may take several days to harden with the lid off. The 2K CRU WB has a very long pot life. The mixed product will remain in a liquid form for many hours with exposure to air before slowly turning to a gel form. Leftover mixed material should be rolled out onto a substrate such as cardboard in multiple coats in order for product to thoroughly harden for proper disposal.

Application Process

Apply the 2K CRU WB at the correct coverage rate, whether used to go over an epoxy coating or as a 2K Grind & Seal System. (See Coverage section.) Using 3/8" non-shedding roller cover, quickly rollout the floor. Immediately after, cross roll the coating in the opposite direction avoiding roller marks. Additional coats will increase thickness and durability.

When applying the primer coat for the 2K Grind & Seal system, the 2K CRU WB will provide a darker finish. The 2K CRU WB primer coat can be substituted with the Epoxy WB Fast. This will provide a lighter finish and faster cure time in between coats. Epoxy WB Fast must be used as the primer coat before applying 2K CRU WB over a cementitious overlayment/topping. To achieve a slip-resistant finish, lightly broadcast aluminum oxide (80-120 grit) into the system and then backroll. It is always best to provide a mockup sample to determine the needs of the coefficient of friction as outlined by the ANIS A137.1 Use the mock up to ensure the size of aggregate and amount used does not make the floor too difficult to clean and maintain

**Connect with
ONYX Concrete Coatings**

Visit us at onyxconcretecoatings.com
Contact us at connect@onyxcoatings.com

